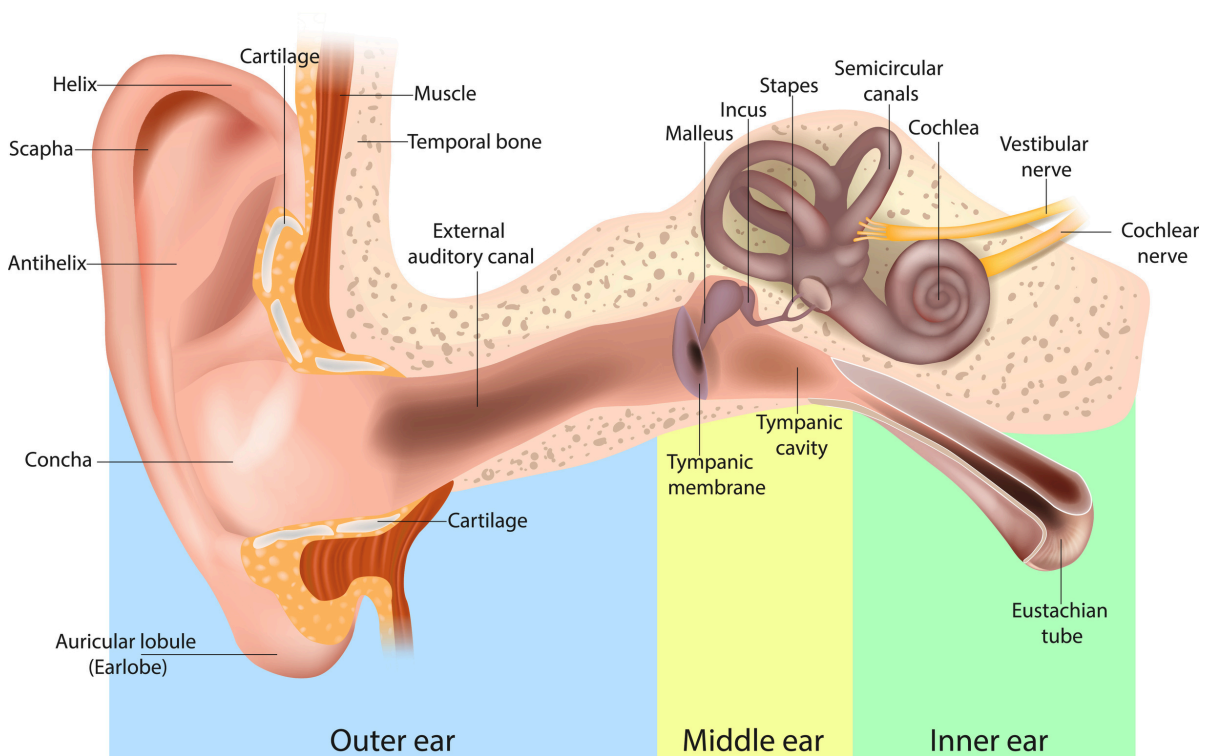




How the ear works



- Pinna captures sound waves and shuttles them down the ear canal.
- It hits the ear drum and turn to movement energy.
- Moves the ossicles (3 little bones in the air filled middle ear cavity) that are attached to the ear drum and finish in the cochlear.
- This fluid filled snail like shell is filled with fluid and tiny hair cells. The movement of the ossicles creates a wave in the cochlear that stimulates the hair cells and creates electrical energy.
- This is transferred through the auditory nerve to the brain which stimulates a response to sound.

Hearing is a brain activity, and hearing loss is a door problem- sound transferring to the brain.